



BILTMORE ESTATE® For Your Home

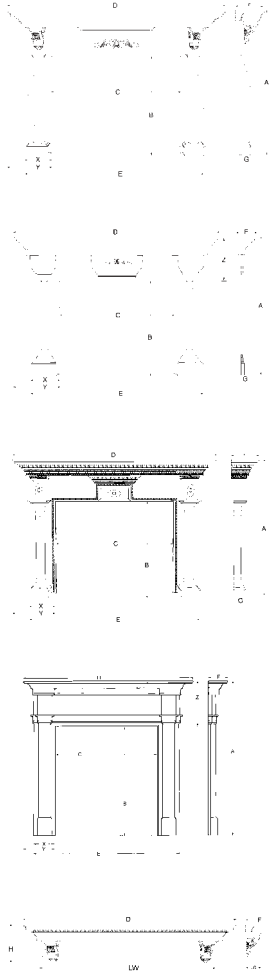
OLMSTED – The genius of design and love of nature of Frederick Law Olmsted, America's foremost landscape architect, crafted the beautiful grounds of Biltmore Estate. The Olmsted Mantel, with the bountiful harvest corbels and appliqué, honors his great sense of style.

HUNT – Richard Morris Hunt, one of the most distinguished architects of the 19th century, reached the pinnacle of his career with Biltmore Estate. The robust and solid design of the Hunt Mantel pays tribute to his vision in creating Biltmore House, a timeless example of quality workmanship.

SOPHIA – The Breakfast Room in Biltmore House was an intimate setting for family and friends to share a quiet meal and casual conversation. The elegant columns and decorative medallions of the Sophia Mantel reflect the room's exquisite décor, graced by a portrait of Sophia Johnson Vanderbilt, George W. Vanderbilt's grandmother.

CECILIA – This simple yet graceful design is drawn from a mantel found in a lady's sitting room in Biltmore House. Refined yet welcoming, this mantel complements any design, creating a warm setting suitable for relaxing, reading, and friendly conversation.

COMMODORE – Cornelius "Commodore" Vanderbilt, George Vanderbilt's grandfather, passed an appreciation for craftsmanship to his descendants. The traditional egg and dart and acanthus detailing of this shelf mantel captures the richness of handcrafted designs from centuries ago.



MANTEL MEASUREMENTS

| | Leg Width X | Leg & Shelf Overhang Y | Breast Height Z |
|---------|----------------|------------------------------|--------------------|
| Sophia | 10 1/2 | 14 7/8 | 16 3/4 |
| Hunt | 11 3/4 | 16 | 16 3/4 |
| Olmsted | 9 1/2 | 14 1/8 | 16 3/4 |
| Cecilia | 6 | 10 1/2 | 13 3/4 |

The Opening Width C, Opening Height B and Return Depth G (Cavity behind mantel) will be made to your specifications

Opening Width C = Your facing width minus 1 inch
Opening Height B = Your facing height minus 1/2 inch
Return Depth G = Your facing thickness plus 1/4 inch

For other dimensions use the following formulas:
(A=Z+B, E=C+2x, D=C+2y)

SHELF MEASUREMENTS

| | Shelf Depth F | Shelf Height H | Lookout Depth LD |
|-----------|------------------|-------------------|---------------------|
| Commodore | 10 1/4 | 14 3/4 | 6 3/4 |

The Length D will be made to your specifications.

FINISH OPTIONS



Other custom finish options are available. Please contact us for details.

Visit www.mantelsdirect.com for more information on these mantels.

Please visit www.biltmore.com to learn more about Biltmore Estate and *Biltmore Estate For Your Home*®, a multi-faceted program that draws inspiration from the entertaining and hospitality extended to the Vanderbilt's guests at the turn-of-the-century. The branded program includes representation in the categories of home furnishings, home and garden decorative accessories, building products, home textiles and home design.



MANTELSDIRECT.com

Phone: 1.888.493.8898 Fax: 1.615.523.2503
www.mantelsdirect.com

MANTELSDIRECT®
217 N. Seminary Street
Florence, AL 35630



BILTMORE ESTATE® For Your Home

Biltmore Estate Collection

Biltmore Estate For Your Home® Mantel Collection is an exclusively licensed offering depicting the beauty and essence of Biltmore Estate.



Sophia

(Shown in Cherry with Red Mahogany finish,
Dark Green Marble facing kit)



BILTMORE ESTATE®
For Your Home

The five distinctive designs in the *Biltmore Estate For Your Home®* Collection of Fine Fireplace Mantels are inspired by actual mantels and design elements found at Biltmore Estate. Each fireplace mantel within the *Biltmore Estate For Your Home®* Collection is handcrafted with careful attention to detail. Features like hand carved corbels and detailed mouldings remind us of the design and craftsmanship found at Biltmore Estate.



Cecilia

(Shown in Poplar with white finish, Marron Braun Italian Marble facing kit)

Located in Asheville, NC, George Washington Vanderbilt's Biltmore House was completed in 1895. A 250-room French Renaissance chateau, it is the largest private residence in the country and a National Historic Landmark. The Estate receives 1,000,000 guests annually from all over the United States. Biltmore House spans 175,000 square feet and has 34 bedrooms, 43 bathrooms, 65 fireplaces, three kitchens and an indoor swimming pool. The estate showcases 8,000 acres (originally 125,00 acres) of glorious gardens and bountiful woodlands.



Olmsted

(Shown in Cherry with Red Mahogany finish, Fiorito Travertine facing kit)

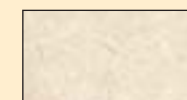


**NATURAL STONE FACING
KIT OPTIONS**

Our collection of imported natural stone fireplace facing surrounds complement our mantels. Three sizes of pre-cut sets are offered in a distinctive selection of granites, marble and limestone. Each set includes a hearth, header and legs.



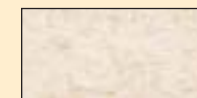
Absolute Black
(Granite)



Crema Marfil
(Spanish Marble)



Magma Black
(Granite)



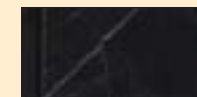
Antique Beige
(Marble)



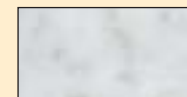
Marron Braun
(Italian Marble)



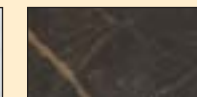
Moka creme
(Portuguese Limestone)



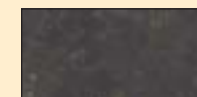
Negro Marquina
(Italian Marble)



White Italian
(Italian Marble)



New St. Laurent
(Marble)



Uba Tuba
(Granite)



Noce
(Travertine)



Fiorito
(Travertine)

- O L M S T E D
- H U N T
- S O P H I A
- C E C I L I A
- C O M M O D O R E



Hunt

(Shown in Maple with Clear Polyurethane finish, Moka Crème Portuguese Limestone facing kit)



Commodore

(Shown in Cherry with Red Mahogany finish)